

MASKING FUN

DESIGN
GUIDE™



Club Mud

A day in the mud
it was the best
retreat for all of us.
We felt like elephants
that you see on those
National Geographic shows
rolling around and
splashing in the pit.
They say they're smart!



We sure clean up well!



DESIGN BY:
JUDI WATANABE

THE
SCRAPBOOK LOUNGE™

CRAFT
TV WEEKLY.com



It's a mask-er-aid party!

Judi loves masks, but not the kind you wear to a costume party. Judi's masks are for dressing up scrapbook pages. Her basic mask creates a patterned background paper, a layered mask floats a butterfly on a card, a mortise mask makes a lava lamp groovy and finally a torn mask creates a beautiful sunset. Let the masking fun begin!



MATERIALS

- Butterfly Stamp
- Lava Lamp Stamp
- Winter Tree Stamp
- Color Duster

- Taupe Ink Pad
- Bisque Yellow Ink Pad
- Burnt Sienna Ink Pad
- Black Ink Pad

- 2 Black Brads
- Scrap paper
- Adhesive

TOOLS

- Cutting mat
- Pen Knife or Craft Knife

FEATURED PRODUCTS

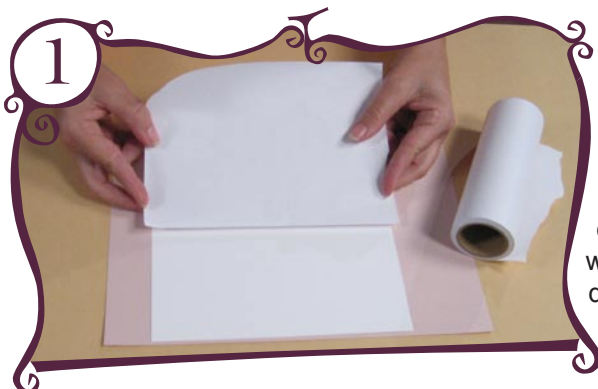
JudiKins:

- Eclipse Tape, 6" Roll
- Lines Mini Bollio or Dots & Stripes Bollio
- Ricky Ticky Stickies Cube Stamp
- Mod Mum Stamp
- Spot Designer's Block

SUPPLIES

- 12" x 12" White Cardstock, 2 sheets
- 12" x 12" Brown Cardstock, 1 sheet
- 5 1/2" x 4 1/4" White Cardstock, 3 pieces
- Pale Turquoise Ink Pad
- Dark Turquoise Ink Pad
- Light Pink Ink Pad
- Dark Pink Ink Pad
- Yellow Ink Pad
- Orange Ink Pad
- Brown Ink Pad
- Bisque Yellow 1/4" Grosgrain Ribbon

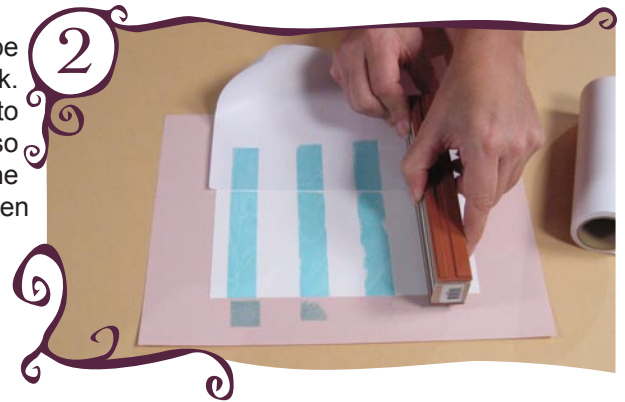
STARTING YOUR PAGE



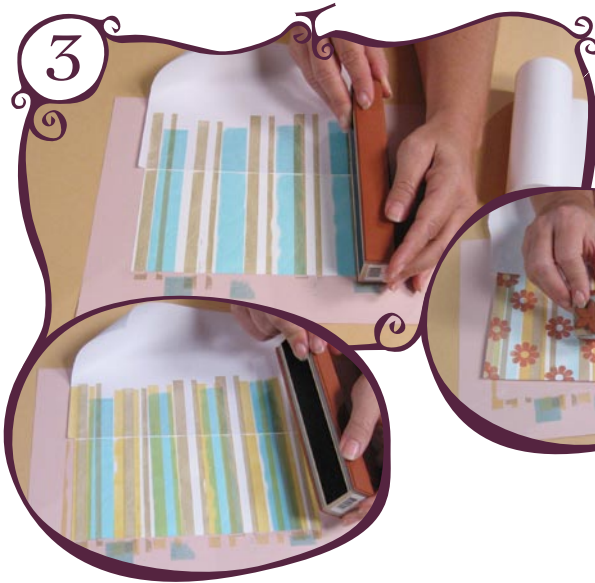
BASIC MASKING

Create a pattern on the foundation page. Place scratch paper on the work surface to protect it. Cover the top half of a 12" x 12" sheet of white cardstock with Eclipse Tape from JudiKins. The 6" Roll works perfectly for this. We're using a smaller piece of cardstock for demonstration purposes.

Stamp stripes on the exposed half of the cardstock. Ink the wide stripe side of the Lines Mini Bollio from JudiKins with pale turquoise ink. Stamp the stripe vertically onto the page at the left edge. Make sure to overlap the Eclipse Tape and the bottom edge of the page slightly so that the stripe pattern will completely cover the exposed portion of the page. Repeat this stripe across the page at 1" intervals, re-inking between each stamping.



Judi used the Lines Mini Bollio for demonstration here, but used the Dots & Stripes Bollio on the full-sized page. The technique is the same for either rubber stamp.



Use the double line side of the Lines Mini Bollio to add more stripes. Ink the double lines with taupe ink. Stamp across the exposed portion of the foundation page, offsetting this stamp 1/2" from the light turquoise stripe added in Step 2. Continue stamping with taupe ink across the page at 1" intervals, re-inking between each stamping. Clean the stamp.

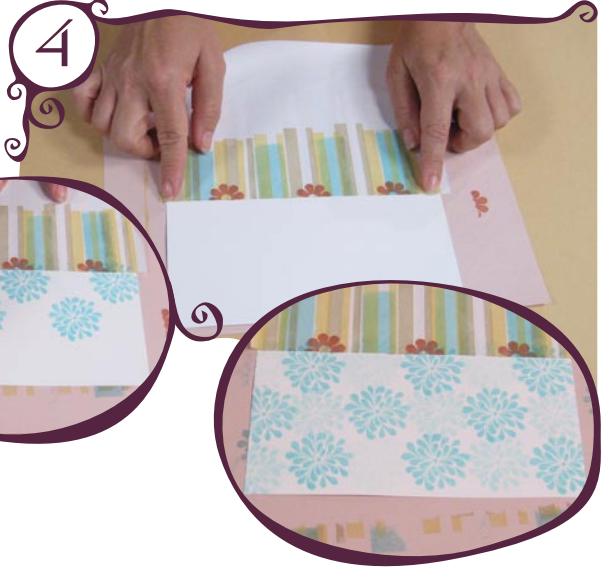
Using the double lines again and bisque yellow ink, stamp across the foundation page again, offsetting the stamp 1/4" or so from the taupe stripes.

Add some detail to the stripe pattern. Use the daisy side of the Ricky Ticky Stickies Cube stamp from JudiKins inked with burnt sienna ink. Stamp the flower on top of the stripes in a checkerboard pattern. Make sure to stamp off the edges so the pattern will appear continuous.

Create a pattern on the other half of the foundation page. Remove the Eclipse Tape from JudiKins, and reapply it to the inked half of the page. Make sure to cover just to the edge of the ink.

Ink the Mod Mum stamp from JudiKins with the same light turquoise used in Step 2. Stamp the mum in a checkerboard pattern across the exposed part of the foundation page. Make sure to stamp off the edges including the edge along the Eclipse Tape.

When the checkerboard pattern is complete across the entire exposed portion of the cardstock, go back and stamp a random pattern with the mums, only this time stamp off the cardstock first to remove some of the ink. This will add lighter images of the mum mixed in with the darker images to create depth.

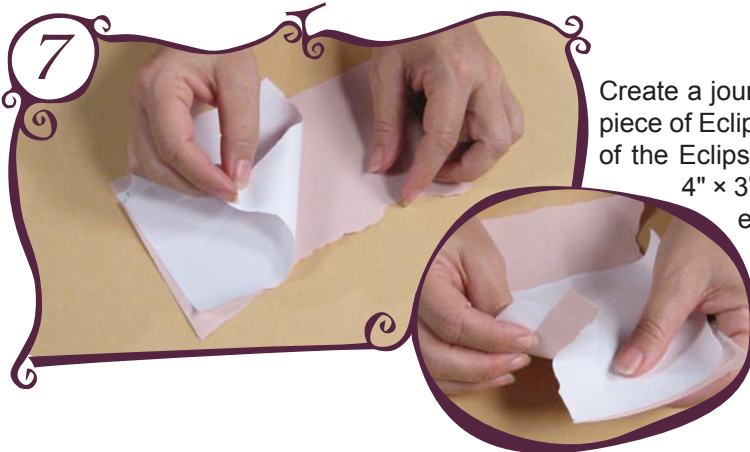


Add some detail to the mum pattern. Ink the pointed flower side of the Ricky Ticky Stickies Cube stamp with dark turquoise ink and stamp in a checkerboard pattern on top of the mum pattern. Twist the stamp as you go, so the flowers are not all pointing in the same direction. Be sure to stamp off the edges, including the Eclipse Tape edge.

Ink the smallest spot on the Spot Designer's Cube with burnt sienna ink and stamp on top of the mum pattern in a random pattern.

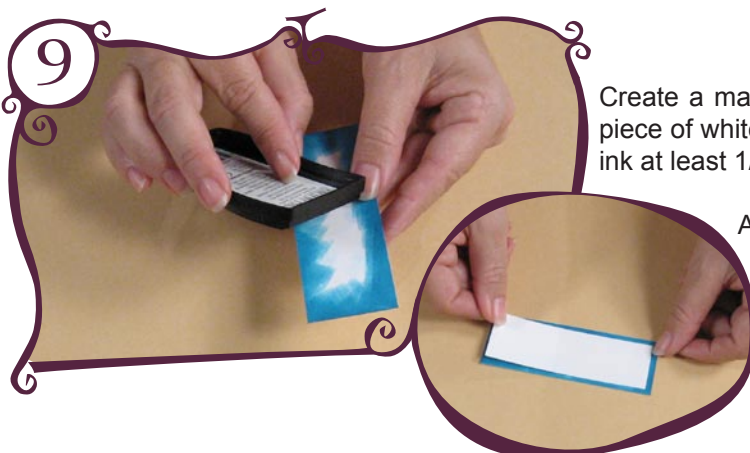
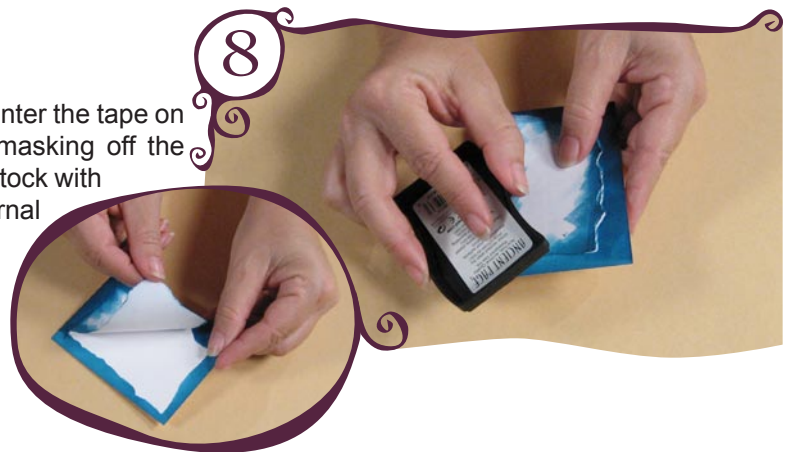
The background pattern is finished, so remove the Eclipse Tape. Adhere a 1/4" wide piece of bisque yellow grosgrain ribbon across the page covering the area where the two patterns meet.





7 Create a journaling block on a 4" x 3" piece of white cardstock. Apply a piece of Eclipse Tape from JudiKins to a scratch piece of paper. The size of the Eclipse Tape should be the same size or a little larger than the 4" x 3" journaling block. The scratch paper makes tearing the tape easier. Tear the edges of the Eclipse Tape (and the scratch paper underneath) creating a piece smaller than the size of the journaling block, about 3 1/2" x 2".

Remove the Eclipse Tape from the scratch paper and center the tape on the 4" x 3" white cardstock for the journaling block, masking off the center portion. Ink the exposed edges of the white cardstock with the dark turquoise ink. Remove the Eclipse Tape and journal in the exposed white area.



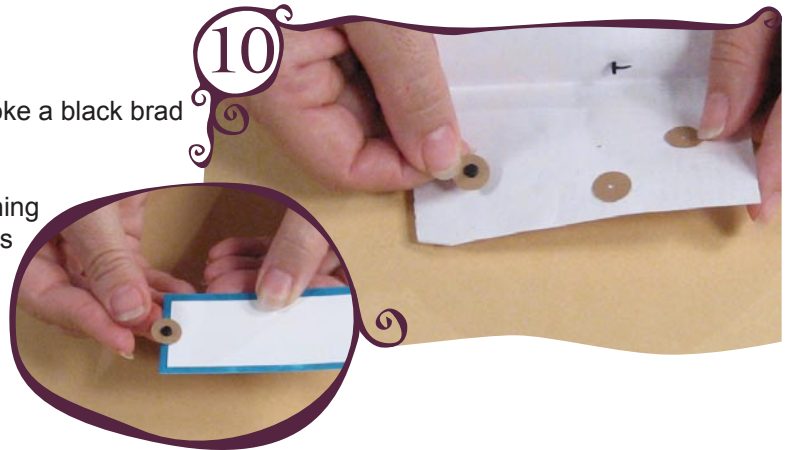
8 Create a matching title block. Ink the outer edges of a 4 1/4" x 1 1/2" piece of white cardstock with the same dark turquoise ink. Make sure to ink at least 1/4" in on all sides.

9 Adhere a 4" x 1 1/4" piece of plain white cardstock to the inked piece, making a nice title block with a turquoise border.

Punch or cut two 1/2" circles out of brown cardstock. Poke a black brad through the center of each circle to make a washer.

Attach a washer to each side of the title block by pushing the brad through the cardstock and opening the prongs on the backside. Set the title block aside.

10



11



Assemble the page. On the top of her page, Judi placed a 7 1/2" x 4" panoramic photo matted on brown cardstock, 1/2" from the top edge and 1/2" from the left edge. Next to the photo, she placed her journaling block, from step 8, again 1/2" from the top edge and 1/2" from the right edge.

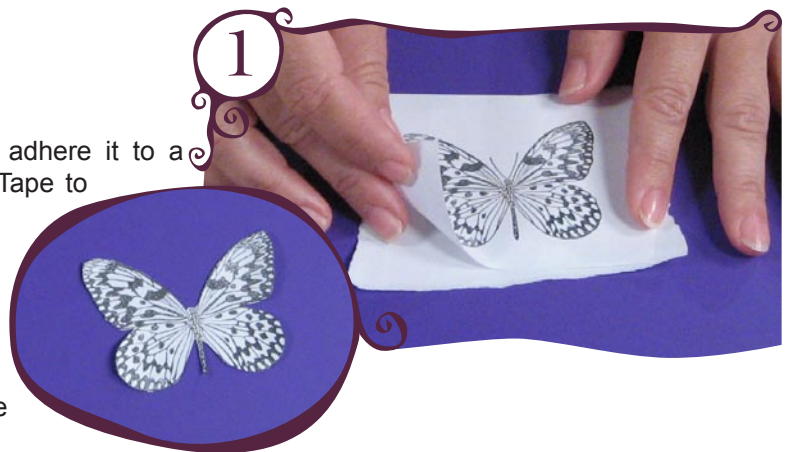
On the bottom of the page, Judi place two 4" square photos matted on brown cardstock side by side, centered horizontally on the page and 1 1/2" from the bottom edge. She then adhered her title block centered across the bottom corners of the two photos to complete the layout.

LAYERED IMAGE MASKS

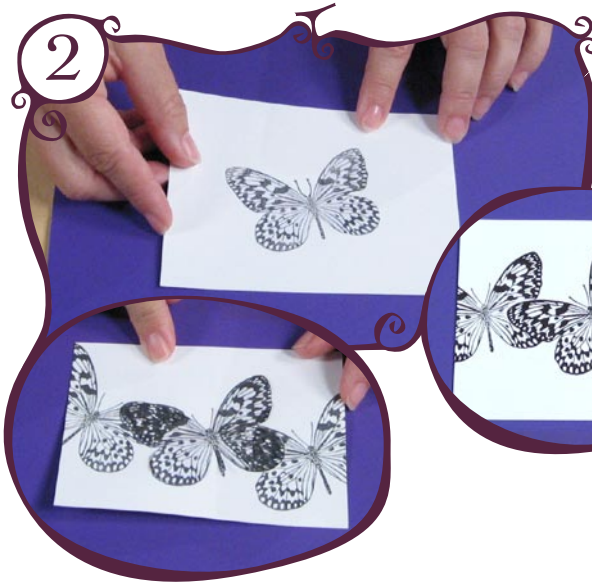
Peel off a piece of Eclipse Tape from JudiKins and adhere it to a cutting mat. Here Judi layered two pieces of Eclipse Tape to create two masks.

Ink the Butterfly Stamp from JudiKins with black ink. Stamp the butterfly onto the Eclipse tape. Cut out the butterfly making a butterfly mask. When cutting out a mask, be sure to cut to the inside of the stamped lines on the image. This will avoid leaving a "halo" around the main image.

1



Sometimes a project will require two masks of the same shape. Because Eclipse Tape is easy to peel off any surface, including itself, layer two pieces of the Eclipse Tape on top of each other. Stamp the image and then cut out both layers at the same time. Peel the two pieces of tape apart and now you have two identical masks.

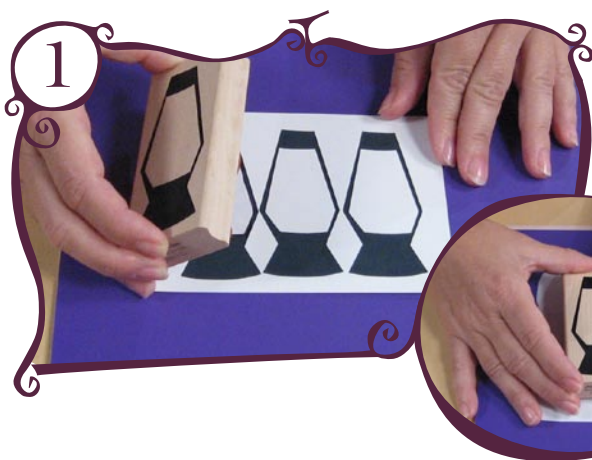


2 Re-ink the Butterfly Stamp and stamp it at an angle onto a piece of white cardstock. Lay the butterfly mask from Step 1 on top of the stamped butterfly on the cardstock, lining it up exactly.

Re-ink the Butterfly Stamp and stamp the butterfly again at a different angle, partially overlapping the left side of the butterfly mask. Re-ink and stamp the butterfly again, this time overlapping the right side of the butterfly mask.

Peel off the mask and see how the first butterfly appears to sit on top of the other two.

Color the first butterfly with colored pencils, in shades of blue. Color the second and third butterflies with shades of yellow and orange. Mat on coordinating cardstock and place on a card or a layout.



MORTISE MASKS

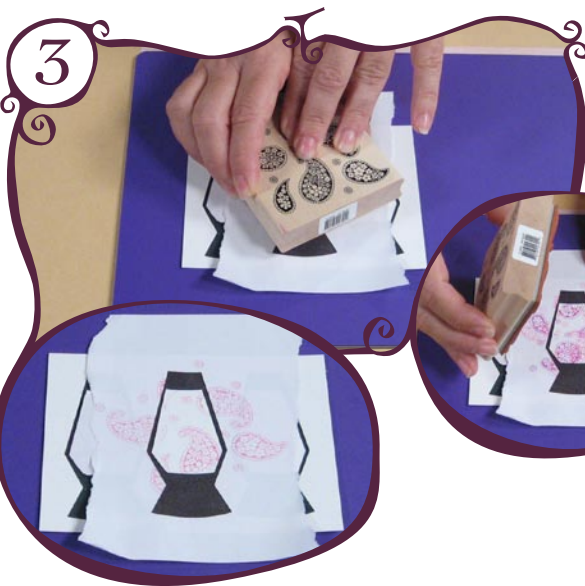
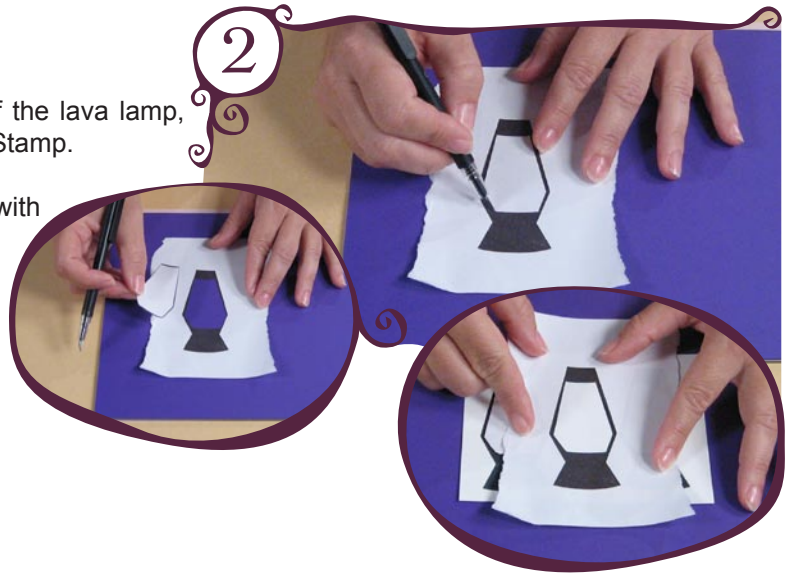
1 Stamp the Lava Lamp Stamp from JudiKins three times, side by side, on a 5 1/2" x 4 1/4" piece of white cardstock.

Adhere a piece of Eclipse Tape to a cutting mat. Stamp the Lava Lamp onto the Eclipse Tape.

With a pen knife or a craft knife, cut out the center of the lava lamp, cutting slightly larger than the frame of the Lava Lamp Stamp.

Peel the lava lamp off the cutting mat. This lava lamp with the hole in the center is the mortise mask.

Apply the mortise mask onto the white cardstock, lining it up exactly with one of the lava lamps stamped in Step 1.



Ink the Paisely Stamp from JudiKins with light pink ink. Stamp onto the exposed area of the lava lamp, applying the stamp at an angle.

Ink the Paisely Stamp with a darker pink and stamp into the lamp again.

Remove the mask to reveal the filled lava lamp.

Repeat the mortise masking technique to fill the other two lava lamps.





TORN MASKS

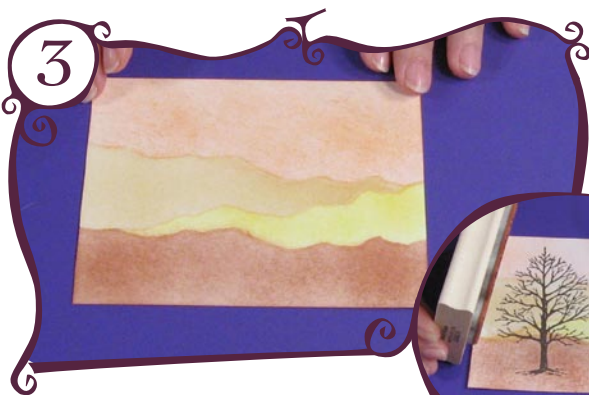
Tear off a piece of Eclipse Tape from JudiKins large enough to cover a 5 1/2" x 4 1/4" piece of white cardstock. Tear this piece of tape in half. Lay each piece of Eclipse Tape onto a 5 1/2" x 4 1/4" piece of white cardstock, each at a different angle, creating a gap in between the pieces.



Tap a Color Duster from JudiKins onto a burnt sienna ink pad. Lightly brush the Color Duster across the exposed area of the cardstock to apply a light dusting of color.

Remove the bottom piece of Eclipse Tape and lay it across the bottom of the cardstock. Move the top piece of Eclipse Tape over the color dusted area, lining it up exactly along the edge of the ink. Because these two pieces were torn from each other, the second piece perfectly masks the inked portion.

Color dust the newly exposed area with a yellow ink.



Repeat moving the masks and color dusting with different earthtone shades of ink until the cardstock is completely covered.

Use brown ink and stamp the Winter Tree Stamp from JudiKins to finish the landscape. Add the finished piece to a layout or a card.



MAKE it YOUR OWN!



A BALLOON BOUQUET

This fun card featuring a bouquet of colorful balloons was created using the same technique Judi used to float her butterfly. First, the balloon was stamped on layers of Eclipse Tape and then the images were cut out to create balloon masks. To make the balloon bouquet, stamp the yellow balloon first in about the middle of the white cardstock panel. Place a balloon mask over the yellow balloon and stamp the light green balloon. Mask that balloon also and then stamp the purple balloon. Mask the purple balloon and stamp the pink balloon. Remove the mask from the yellow balloon and place it on the pink balloon. Continue masking and stamping balloons until your bouquet is as big as you want it. Draw balloon strings with a permanent black pen. Stamp "happy birthday" in blue and finish it up with a green dotted Swiss bow.

A FANCY CAT

This kitty card uses the mortise masking technique. First an outline image of a cat was stamped onto Eclipse Tape. Cut out the inside portion of the cat. The remaining image on the Eclipse tape is the mortise mask. Stamp the cat image again on a tan confetti panel. Place the mortise mask of the cat over the stamped image – the inside of the cat image is all that is exposed. Now stamp the 'swirly background' over the opening in the mortise mask. Colored pencil was added to highlight the heart image inside the cat.



CONGRATULATIONS

You've just completed Masking Fun, but the fun doesn't stop there!
Be sure to stop back by The Scrapbook Lounge every week for more exciting new twists on scrapbooking!