

FOREVER DIAMONDS

DESIGN
GUIDE™



DESIGN BY:
JUDI WATANABE

THE
SCRAPBOOK LOUNGE™

CRAFT
TV WEEKLY.com



The brilliance of diamonds – in the form of glazing techniques – are a crafter's best friend as Judi shows with these projects. Using the dimensional glaze alone adds subtle shape and shine to a stamped and colored image. Then tiny glass beads glimmer as they catch the light on a beautiful card. For the grand finale, Judi creates a sparkling transparent window full of snowflakes. Once you try these techniques, diamond glazing will be your best friend too!



MATERIALS

- Alpine Snowflake Rubber Stamp

- Delicate Snowflakes Cube

- Old World Snowflake Rubber Stamp

- Dye-based Ink Pads in: Caribbean Blue, Yellow Green, Light Blue

- Adhesive

FEATURED PRODUCTS

JudiKins

- Diamond Glaze
- Embossable Window Plastic
- Fans Panel Rubber Stamp
- Clear Glass Beads

SUPPLIES

- 6" x 2 1/2" White Cardstock, Two Pieces

- 7 1/2" x 8 1/2" Light Blue Cardstock, One Piece

- Dye-based Ink Pads in: Bubble Gum Pink, Plum

- Black Dye-based Ink Pad

- Black Solvent-based Ink Pad

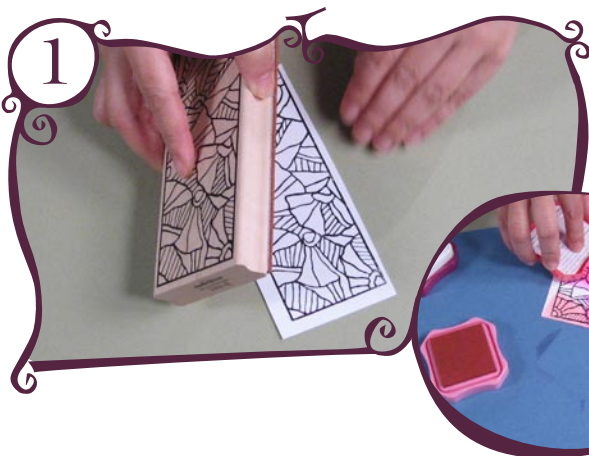
- Dye-based Re-inkers in: Dark Blue, Blue, Purple

- Scratch Paper

TOOLS

- Small Paintbrush

STARTING YOUR PAGE



BASIC GLAZING

Stamp the Fans Panel Stamp from JudiKins on a 6" x 2 1/2" piece of white cardstock using black dye-based ink. Cut out the stamped image.

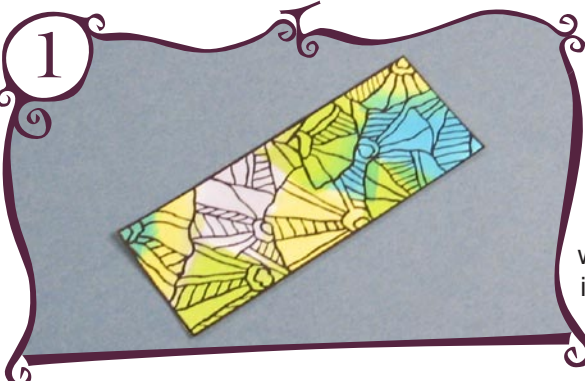
Place the card on a scratch piece of paper and rub three coordinating dye-based pink ink pads across the image completely covering the card with the inks. Judi used Pink, Bubble Gum Pink and Plum inks.



Dye-based inks are somewhat transparent, so overlapping them as you apply them to the cardstock creates a variety of colors in the pattern.

Spread Diamond Glaze from JudiKins on selected areas of the cardstock to create raised, shiny accents. To spread the glaze, you can use the applicator tip on the bottle or a small paintbrush. Set aside to dry for about 20 minutes.

The glazed card is now ready to use as an embellishment for a layout or a greeting card.



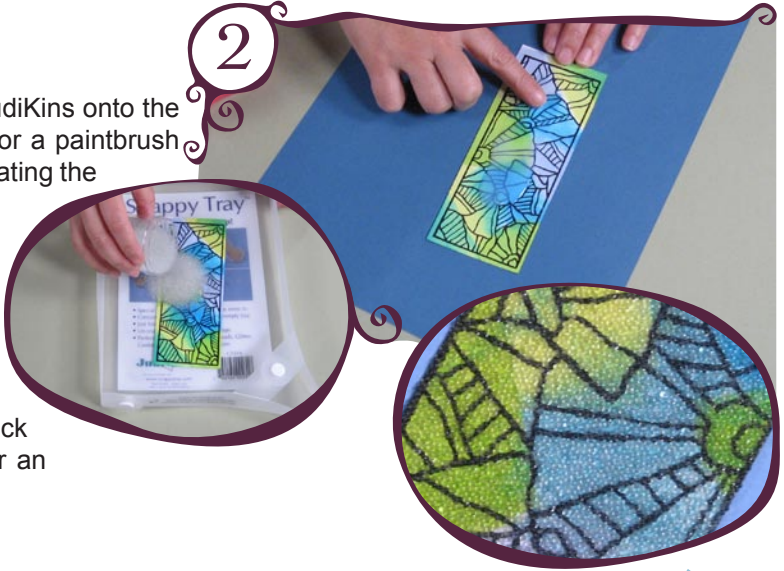
BEADED GLAZING

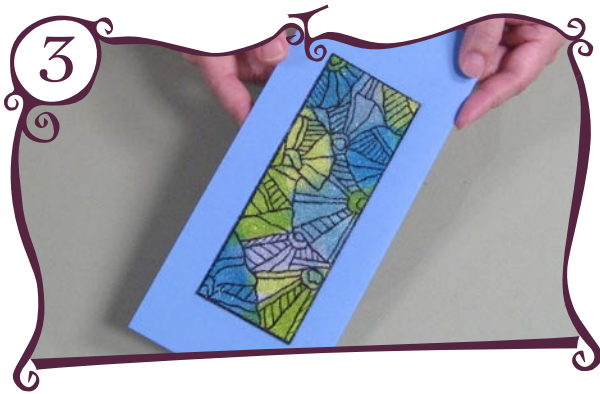
Stamp the Fans Panel Stamp from JudiKins on a 6" x 2 1/2" piece of white cardstock using dye-based black ink. Rub three coordinating dye-based ink pads across the stamped image, completely covering the card with the inks. Judi used Caribbean Blue, Yellow Green and Light Blue inks.

Squeeze a 2" diameter circle of Diamond Glaze from JudiKins onto the center of the stamped Fans Panel image. Use fingers or a paintbrush and spread the Diamond Glaze across the card thinly coating the entire surface.

While the glaze is still wet, place the card in a JudiKins Snappy Tray or on a paper plate. Pour tiny glass beads over the entire surface of the card. Let the beads sit for a minute.

Lift up the card and tilt it allowing excess beads to fall back into the tray for later use. Set the card aside to dry for an hour.



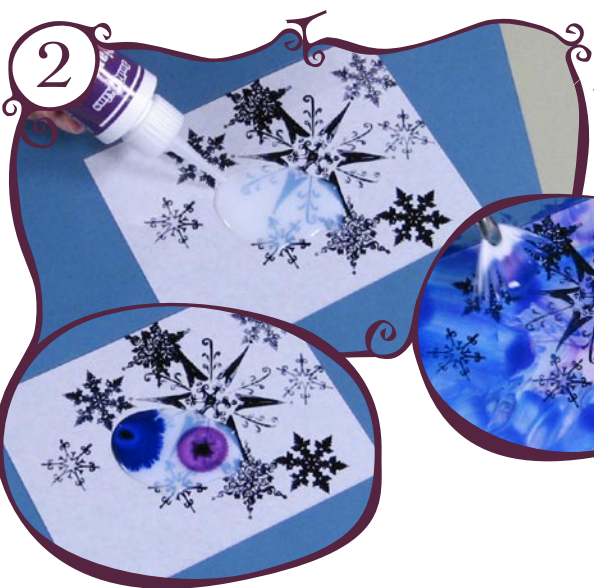
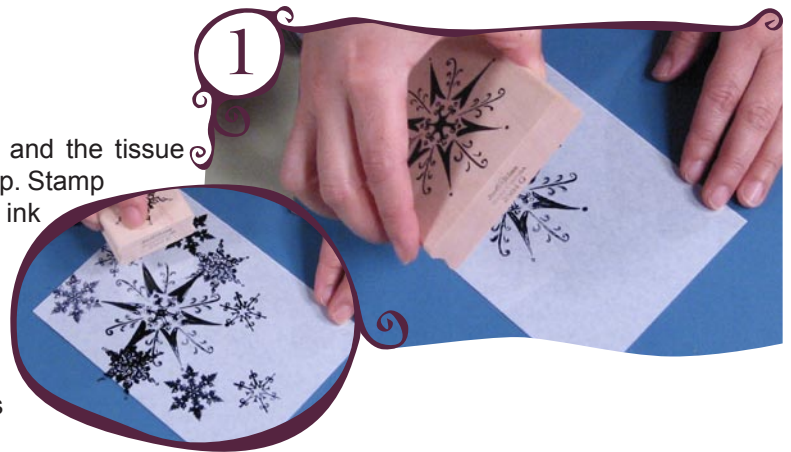


Fold a 7 1/2" x 8 1/2" piece of light blue cardstock in half lengthwise. Adhere the beaded Fans panel to the front of the card, 1 1/2" from the top edge and centered horizontally.

GLAZED WINDOW

Lay a piece of JudiKins' Embossable Window Plastic and the tissue paper backing on a piece of scratch paper, plastic side up. Stamp the Alpine Snowflake image using a black solvent-based ink onto the window plastic.

Continue stamping snowflakes onto the window plastic using the Old World Snowflake and the Delicate Snowflakes cube, both from JudiKins. Stamp off the edges of the plastic to give the illusion of a continuous pattern. Let it dry.



Turn the plastic over, stamped image side down. Squeeze a 2" circle of Diamond Glaze from JudiKins onto the center of the plastic.

Add two to three drops from a dye-based re-inker bottle to the Diamond Glaze. Judi used re-inkers for her ink in blue, dark blue and purple.

Use a paintbrush and spread the tinted Diamond Glaze across the plastic, all the way to the edges, mixing the colors slightly.

Sprinkle clear glitter across the wet Diamond Glaze.

Take the tissue paper that came with the Embossable Window Plastic and crumple it up. Flatten out the tissue paper and lay it onto the wet Diamond Glaze.

The wrinkles in the tissue paper hold the Diamond Glaze and add dimension and color variation to the piece. Set aside the piece to dry. This element is now ready to be used on a layout, card, or album. Judi used this piece as the cover for an accordion-fold album she is making for her nephews.



MAKE IT YOUR OWN!™



FLOWER POWER

On this card, Judi stamped an image on JudiKins' Embossable Window Plastic and then painted the image with ink-tinted Diamond Glaze. A sprinkle of glitter makes these funky circles a real eye-catcher.

FROSTY SNOWFLAKES

These silver snowflakes are backed with the tinted Diamond Glaze and the tissue paper to create an elegant frosty card.



ROSES AND DIAMONDS

The rose window on this card uses the same tinted glazing techniques. Mounting the plastic on white cardstock gives a nice opaque background to show off the rich red hue of the roses.



CONGRATULATIONS

You've just completed your Forever Diamonds project, but the fun doesn't stop there! Be sure to stop back by The Scrapbook Lounge every week for more exciting new twists on scrapbooking!