

# SHRUNKEN TREASURES

DESIGN GUIDE™



DESIGN BY:  
JUDI WATANABE

THE  
SCRAPBOOK LOUNGE™

CRAFT  
TV WEEKLY.com



Judi is creating shrunken treasures! With the help of a heat tool, she turns ordinary shrink plastic into faux broken tiles. A little tape and some tiny beads and those tiles become a beautiful mosaic. Whipping out the heat tool again, Judi shrinks plastic into beach glass, that's not only lightweight, but beautiful. Her final treasure is a beautiful golden embellishment perfect for a layout, or in this case, a picture frame.



## MATERIALS

- Flower Power Heart Stamp
- Arabesque Ivy Stamp
- Diamond Glaze
- Trio Adhesive
- Square Cream Notecards
- Silver Glass Beads
- Tan Fiber, 14" length
- 5 Tiny Sea Shells
- Die-Cut Title
- Vellum, 8 1/2" x 11" Sheet
- Water Based Gold Metallic Marker
- Scissors
- Ink Pen for Journaling

### FEATURED PRODUCTS

#### JudiKins:

- Shrink Plastic in Clear, Black and White
- Mosaic Tape
- Stitch Leaf Background Stamp

### SUPPLIES

- Re-inkers in shades of blue, purple and brown
- Fine Gauge Wire, 14" length

### TOOLS

- Heat Tool
- Wooden Chopsticks or Tweezers
- Aluminum Covered Board

### PHOTOS

- Background Photo enlarged to 12" x 12"
- Photo enlarged to 11" x 4"

## STARTING YOUR PAGE



### MOSAIC TILE CARD

Begin the card by making faux broken tiles. Tear off a 2" x 1 1/2" rectangular piece from a sheet of White Shrink Plastic from JudiKins. The size of the piece does not need to be exact, as this is a "broken" tile.

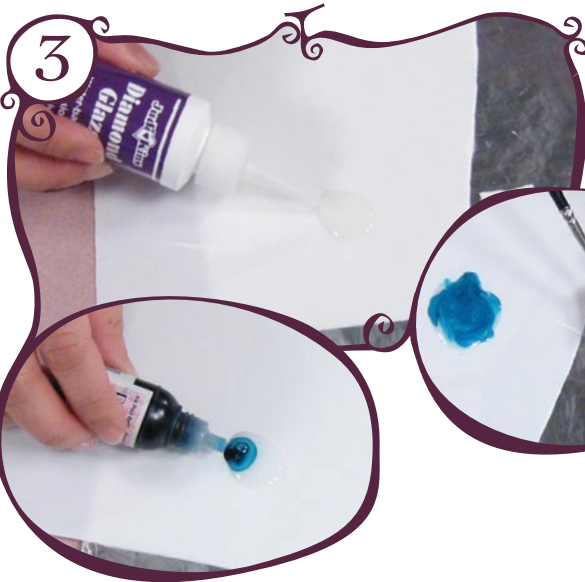
Place the torn shrink plastic on piece of cardboard covered with aluminum foil. Hold the plastic in place using a wooden chopstick or tweezers and use a heat tool to shrink the plastic. The plastic is done shrinking when it reaches a stable size and flattens out.



Shrink plastic will tear pretty easily in one direction. The other direction is difficult to tear. Snipping the edge with scissors will get the tear started, and once started the plastic will tear easily in that direction as well.

Quickly and firmly press the Arabesque Ivy rubber stamp from JudiKins, rubber side down, onto the plastic piece while it is still hot.

You will make an impression of the stamp's image in the hot plastic, creating an intaglio effect.



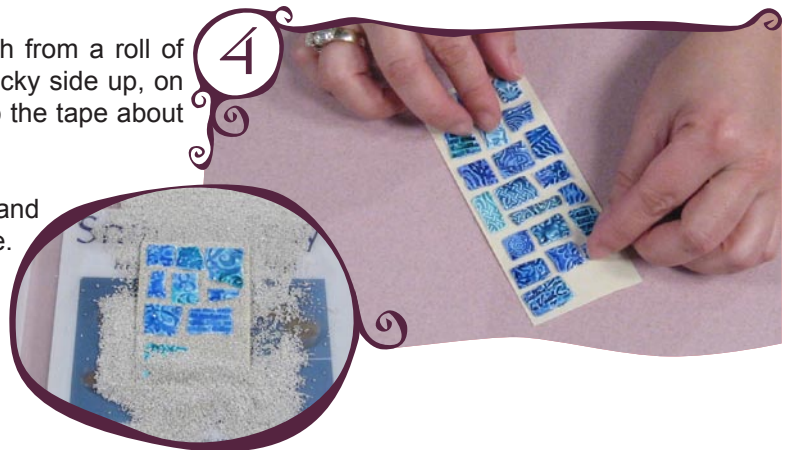
Color the plastic tile. Squeeze out a dime-sized portion of Diamond Glaze onto a scrap of plastic or foil.

Add a drop of a dye-based ink from a re-inker bottle to the glaze.

Using a paintbrush, paint the plastic tile with the tinted glaze. The glaze will puddle in the recesses of the molded image giving depth and dimension to the piece. Make several more tile pieces in the same manner, using different stamps and shades of blue inks. Judi used the Flower Power Heart, the Daisy Block and the Treasure Cube stamps, all from JudiKins, for some of her other tiles. Set aside the tile pieces to dry for about thirty minutes.

Make a mosaic with the tile pieces. Cut off a 5" length from a roll of 2" wide Mosaic Tape from JudiKins. Place the tape, sticky side up, on the work surface. Stick the tile pieces from Step 3 onto the tape about 1/8" - 1/4" apart, making a random mosaic pattern.

Grout the mosaic. Place the tape strip in a Snappy Tray and pour micro silver beads from JudiKins all over the piece. The beads will stick to the exposed tape in between the tile pieces and look like grout. Tap off the excess beads and save them for another project.



Mount the mosaic piece. Peel the backing off the mosaic tape and mat it on a 2 1/4" x 5 1/4" piece of blue cardstock. Use another piece of the double-sided Mosaic Tape from JudiKins and adhere the matted mosaic onto a 5 1/2" square cream note card, 1/4" from the right edge of the card. The mosaic could also be added to a layout or album cover.

## BEACH GLASS LAYOUT

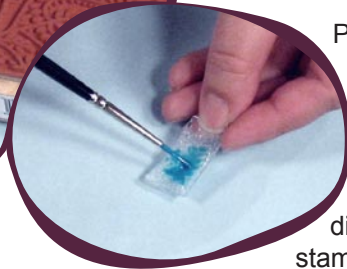
Begin by making faux beach glass. Tear off a 2" x 1 1/2" rectangular piece from a sheet of Clear Shrink Plastic from JudiKins. The size of the piece does not need to be exact, as this is a piece of "broken glass".

Place a piece of scratch paper on top of a piece of cardboard covered with aluminum foil. Place the torn shrink plastic piece on top of the scratch paper. The scratch paper will add a very subtle texture to the plastic, giving it a frosted look. Hold the plastic in place using a wooden chopstick or tweezers and use a heat tool to shrink the plastic. The plastic is done shrinking when it reaches a stable size and flattens out.





2 Quickly and firmly press the Stitch Leaves Background rubber stamp from JudiKins, rubber side down, onto the plastic piece while it is still hot. You will make an impression of the stamp's image in the hot plastic, creating an intaglio effect.



Paint the molded plastic to look like beach glass using Diamond Glaze and a drop of dye-based ink just as you did for the mosaic tiles. However, for the beach glass, paint on the shiny side of the plastic. When you turn the piece over, it will have the soft frosted look of beach glass. Make several more beach glass pieces in the same manner, using different shades of blue inks and different stamps. Additional stamps Judi used for her beach glass include Confetti Falling, Butterfly Arabesque and Psychoanalysis, all from JudiKins. Set aside the beach glass pieces to dry for about thirty minutes.

Prepare other elements for the layout. Choose a suitable 12" x 12" beach background paper, or enlarge a beach photo to 12" x 12" and print out on a large format printer as Judi did. This will be the foundation page. Note: If you don't have access to a large format printer, print out the photo to 8 1/2" x 11". Layer onto a neutral color of 12" x 12" cardstock and continue making your layout.

Create a panoramic photo: enlarge a standard sized photo to a 11" x 11" and crop off the top (or bottom) of the photo, so that it measures 11" x 4".

Create a seashell strand by stringing tiny seashells on a piece of fine gauge wire. Loosely wrap some tan fibers around the wire.



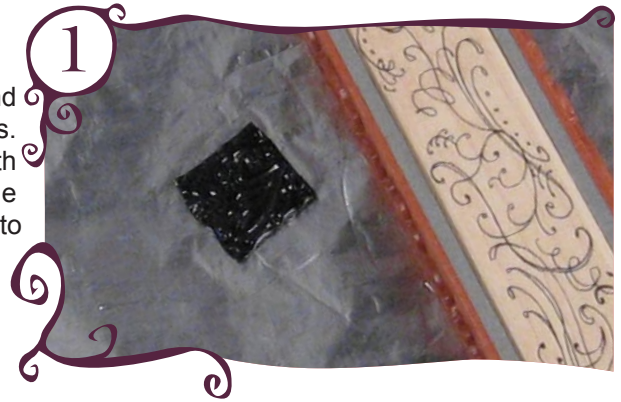
3 Assemble the page. Adhere the "panoramic" photo to the bottom of the foundation page, 1/2" from the bottom of the page and centered horizontally. Trim an 8 1/2" x 11" piece of vellum to 7" x 11". Adhere the vellum horizontally across the top of the foundation page, aligned at the bottom with the "panoramic photo". Adhere a die-cut title across the top of the foundation page. Judi's title is "Beachcomber".

4 Lay the seashell strand vertically down the right side of the foundation page 2 1/2" from the right edge. Wrap the ends of the strand around the top and bottom edges of the foundation page and tape the ends to the back of the page.

To finish the layout, use Trio Adhesive or other clear tab adhesive and attach the beach glass pieces from Step 2 on either side of the seashell strand. The beach glass should be attached with the frosted side up to create the worn glass effect.

## EMBELLISHED FRAME

Create embellishments for a picture frame. Cut four 2" squares and eight 5/8" squares from a sheet of Black Shrink Plastic from JudiKins. Place the torn shrink plastic on a piece of cardboard covered with aluminum foil and shrink with a heat tool. Quickly and firmly press the Chic Mince Bollio rubber stamp from JudiKins, rubber side down, onto the plastic piece while it is still hot.



Shrink plastic shrinks to 37.5% of its original size. When you need a specific finished size, use the following formula to determine the size of the piece of shrink plastic to start with:

$$\text{Final Size(in inches)} \div 0.375$$



Paint the raised areas of black tile piece from Step 1 using a water based gold metallic marker, to create an antiqued metal effect. Shrink the remaining black plastic squares. Paint the larger squares with the gold metallic marker, but leave the smaller ones unpainted for contrast.

Use small pieces of Mosaic Tape from JudiKins and attach a large square in each corner of a white picture frame. Attach small squares on two sides of each of the large sides to finish embellishing the picture frame.

# MAKE IT YOUR OWN!



## PRETTY IN PURPLE

This mosaic tile card uses the same techniques as Judi's card, but with a different color scheme: purples, pinks and gold. A strand of mizuhiki cord provides a border for the mosaic and the card itself echoes the swirls imprinted on the tiles.

## GLASS ECHOES

This simple card uses the faux beach glass technique and the images from the Treasures Cube that are stamped on the card.



# CONGRATULATIONS

You've just completed your Shrunken Treasures, but the fun doesn't stop there! Be sure to stop back by The Scrapbook Lounge every week for more exciting new twists on scrapbooking!